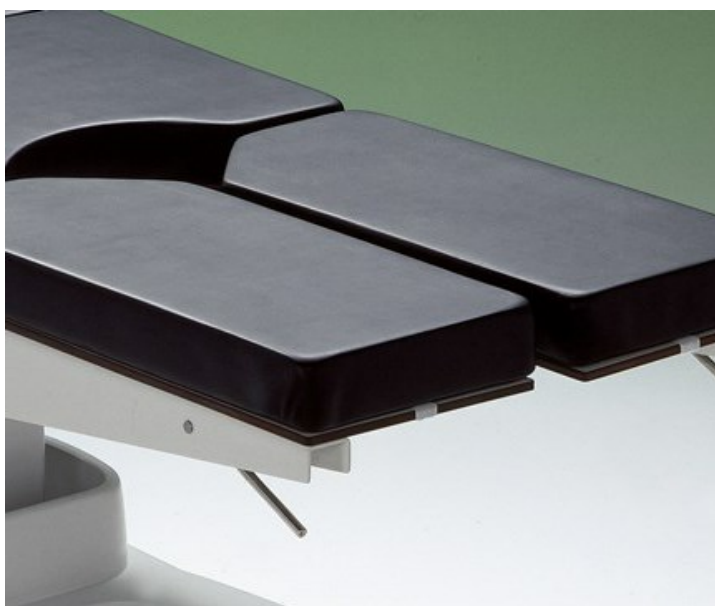


DIVIDED LEG SECTION 1826 I

Gas spring assisted divided leg sections for Rapido operating table including mattresses. EUR, UK and US accessory rails can be ordered separately.

Section replaces one-piece leg section. Horizontally adjustable between 0–90 degrees, vertically +16 to -90 degrees.



Order no.

100 018 261 Divided leg section 1826I for Rapido

100 001 481 Accessory rails to leg section, EUR

100 001 482 Accessory rails to leg section, UK

100 001 483 Accessory rails to leg section, US

Width	276 mm of one section
Length (mattress base)	625 mm
Width (table top)	600 mm
Leg section adjustment	-90 - +16 °
Weight	14.6 kg
Product Code	100018261

