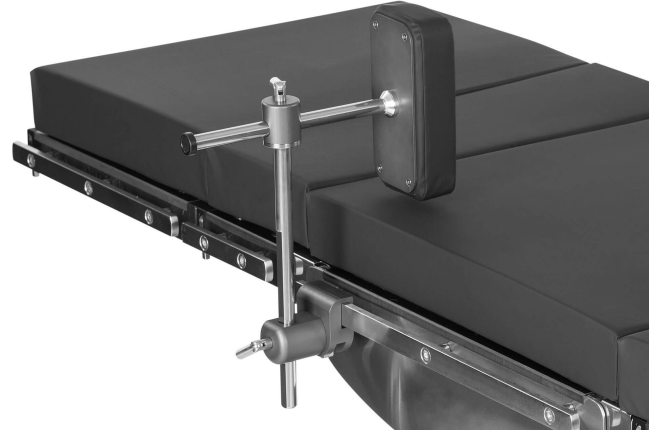


Lateral support, adjustable narrow SS1020

- user-friendly lateral support
- padding (50 mm) designed to prevent pressure and nerve injuries
- antimicrobial tightening lever
- height adjustment range 270 mm
- pad size 100x200 mm
- Recommended clamps: CL2010/ CL2110



TECHNICAL SPECIFICATIONS

Product code	SS1020

Contact us

Merivaara Corp.
Tarmontie 2-4
15860 HOLLOLA
FINLAND

+358 3 3394 611

merivaara@merivaara.com