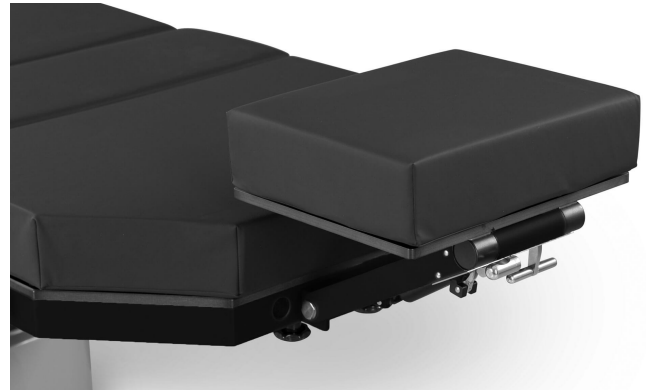


# Head rest double articulation, narrow HR1120

- versatile adjustment offers optimum patient positioning for surgery
- angular adjustments with gas springs
- adjustment angle +37°/-58° and height adjustment 135 mm
- requires adapter 60146
- especially suitable for ENT
- Can be used without adapter for ENT Upper-Back Section 60325 and EYE ENT145325



## TECHNICAL SPECIFICATIONS

Product Code	HR1120

### Contact us

**Merivaara Corp.**  
Tarmontie 2-4  
15860 HOLLOLA  
FINLAND

+358 3 3394 611

[merivaara@merivaara.com](mailto:merivaara@merivaara.com)